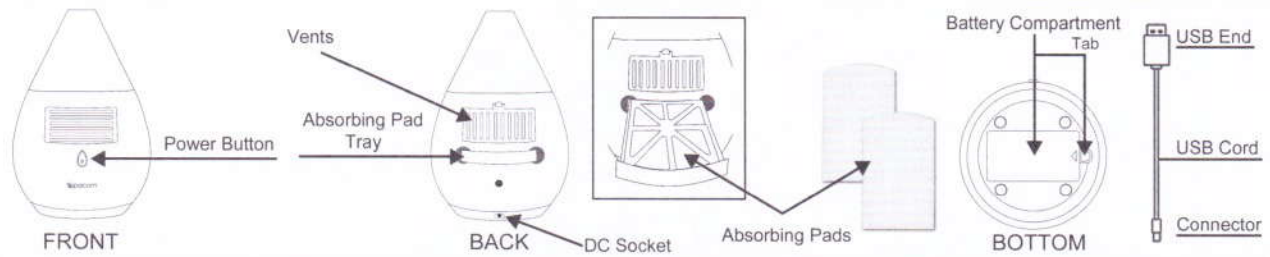


# Scentifier™ Portable Fan Diffuser INSTRUCTIONS

## PARTS



## FEATURES

Silent fan broadcasts your favorite essential oil aromas.

1. Coverage Area: Up to 100 sq ft
2. Light Mode: Rotating color
3. Includes 3 unscented, replaceable Absorbing Pads
4. Power: USB Cord (included) or 4 AA batteries (not included)

## CARE & MAINTENANCE

Use a new Absorbing Pad for each different essential oil.

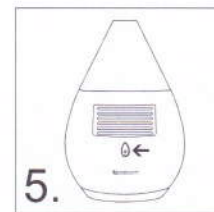
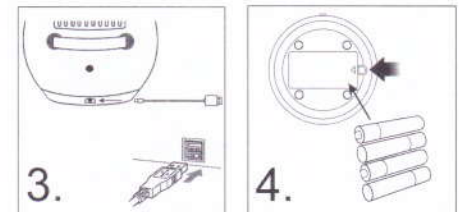
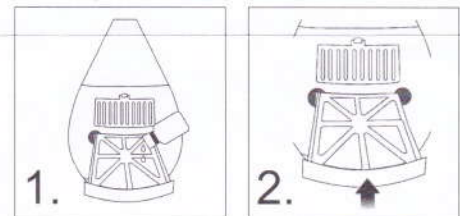
Essential oil should not come in contact with the exterior surface of the unit. If essential oil drips onto the unit, wipe off immediately with a soft cloth.

After approximately 30 days of use, discard the Absorbing Pad.

## INSTRUCTIONS FOR USE

Place the diffuser on a flat surface when operating.

1. Slide the Absorbing Pad Tray out to reveal the replaceable Absorbing Pad. Pour 3-5 drops of essential oil directly onto the Pad.
2. Slide the Absorbing Pad Tray back into place.
3. If you are using the USB Cord, plug the Connector into the DC Socket in the back of the diffuser. Then plug the USB End into a USB port.
4. If you are using batteries, push the Battery Compartment Tab in and upward to lift off the cover. Insert 4 AA batteries (not included) into the Battery Compartment and replace the cover.
5. **Power Button Functions**
  - 1<sup>st</sup> Push = Continuous diffusion with rotating color lights
  - 2<sup>nd</sup> Push = Turns unit off completely



## NOTES:

- Only use 100% pure essential oil. Other types, such as fragrance and synthetic oils, may cause corrosion that can damage your diffuser and void our warranty.
- Replace the Refill Absorbing Pad when changing fragrance or after extended use. To store used pads, place in an airtight container or re-sealable plastic bag.
- To purchase additional Absorbing Pads, visit [sparoom.com](http://sparoom.com)
- Disconnect USB Cord when not in use.