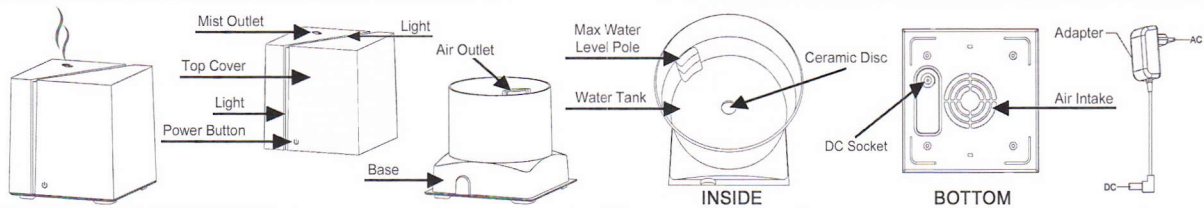


Onyx™ Essential Oil Diffuser INSTRUCTIONS

PARTS



FEATURES

Ultrasonic vibrations transform your essential oil and water into fragrant mist.

1. Water Capacity: 200 mL (6.76 fl oz)
2. Coverage Area: Up to 400 sq ft
3. Continuous Operation: Up to 8 hours
4. Intermittent Operation: Up to 16 hours at 30 sec intervals
* Run time will vary depending on humidity levels and other external factors.
5. Light Mode: Warm white
6. Automatic safety shut-off
7. Power: AC Adapter, c UL us approved

CARE & MAINTENANCE

Only use the power cord supplied with the unit. Always remove the power cord before cleaning. Essential oil should not come in contact with the exterior surface of the unit.

TO CLEAN:

* SpaRoom® KLENZOR™ tablets may be used to renew diffuser to like-new condition.

Remove Top Cover. Empty the water from the Water Tank away from the Air Outlet.

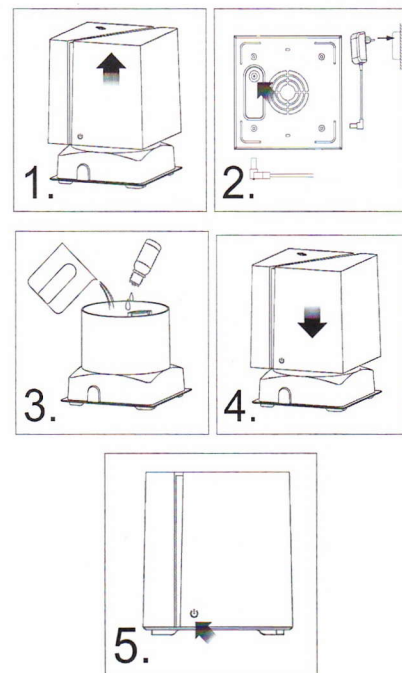
The Ceramic Disc should not come in contact with any hard or sharp objects.

To remove possible buildup, gently use a cotton swab dipped in white vinegar to wipe out the inside. Dry with a soft cloth to avoid mineral buildup. Do not use strong cleaning agents.

INSTRUCTIONS FOR USE

Place diffuser on a flat, water-resistant surface.

1. Remove the Top Cover from the Base.
2. Insert the Adapter's DC connector into the DC on the bottom of the Base. Plug the AC end of the Adapter into an electrical wall outlet.
3. Pour tap water into the Water Tank up to the Max Water Level Pole. Add several drops of essential oil directly into the Water Tank.
4. Replace the Top Cover onto the Base.
5. **Power Button Functions:**
 - 1st Push = Continuous mist with warm white light
 - 2nd Push = Intermittent mist with warm white light
 - 3rd Push = Turns unit off completely



NOTES:

- Only use 100% pure essential oil. Other types, such as fragrance and synthetic oils, may cause corrosion that can damage your diffuser and void our warranty.
- The diffuser will automatically turn off when water level becomes too low.
- Disconnect Adapter from electrical outlet when not in use.