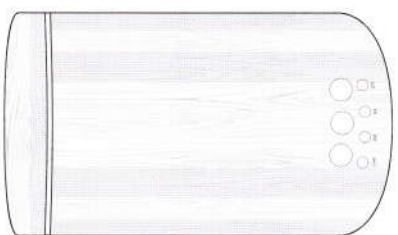


# SERENE LIVING® SERENE ESSENTIALS

benefits  
for healthful  
Essential 100% Pure  
of drops 5 Add



## INSTRUCTION & CARE

### SIENNA BAMBOO DIFFUSER

#### LIMITED ONE YEAR GUARANTEE

Purchase of this diffuser includes a One Year Limited Guarantee that covers manufacturing defects. It excludes normal wear and tear, damage caused by improper use, oil damage to the outside of the diffuser or oil damage to any other personal materials that the oil may come into contact with.

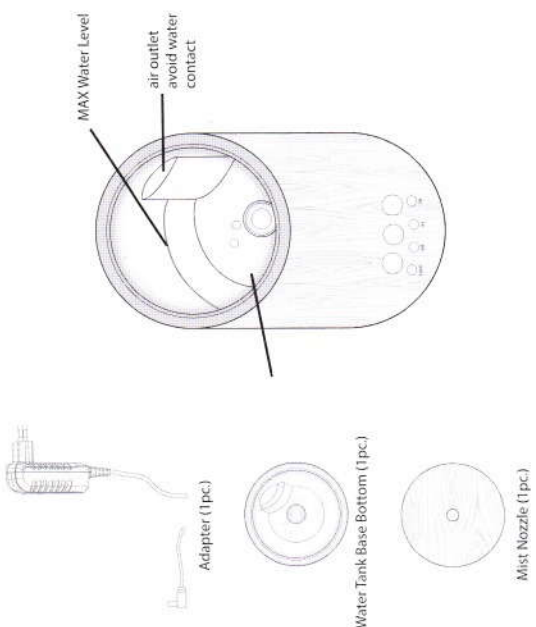
If you believe your unit is defective or malfunctioning, please contact us at 888-548-0040.

Note that customers are responsible for return shipping costs if seeking replacement, even when covered by a guarantee. Manufacturer reserves sole discretion to determine whether replacement is needed. All diffusers sent to manufacturer for inspection must be clean and free of any oil residue or it will be returned without inspection.

THIS GUARANTEE IS EXCLUSIVE OF ALL OTHER GUARANTEES OFFERED BY THE MANUFACTURER, EXPRESSED OR IMPLIED, ALL OF WHICH ARE EXPRESSLY DISCLAIMED.

Congratulations on your purchase of the Serene Living Sienna Bamboo Diffuser.

Please read the instructions carefully before using.



## 1 PARTS

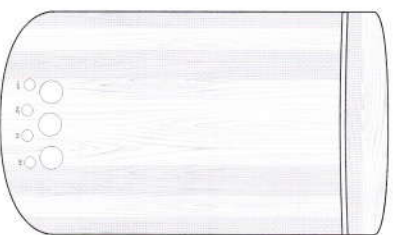
Item No	00635
Color	Sienna brown
Water Capacity	150ml
Run Time	7H continuous/14H intermittent
Features	continuous/on/off, automatic shutoff night light
Coverage	Up to 1,000sq. ft.
Rated Power	12 W
Adapter Power	100-240V, 24V-0.5A

## 2 SPECIFICATIONS

### PRECAUTION

**DO NOT USE DISTILLED WATER**  
Please read the instructions carefully before using. Manufacturer accepts no liability for damage caused by incorrect use of the Essential Oil Diffuser.

⚠ Warning and cautions	⊘ No allowed actions	🚫 Strictly prohibited
⚠	1. Clean the unit when changing to a different oil	
⚠	2. Clean the unit by rinsing the water tank and wiping it dry with a clean cloth	
⊘	3. Do not use detergents, solvents or abrasive agents to clean the diffuser unit	
⚠	4. Shut off and unplug the power before cleaning	
⚠	5. Use the original adapter provided by the manufacturer	
⚠	6. If you don't use the device for a long time, unplug and pour water out	
⊘	7. Never use steamed water or very cold water. Never use corrosive solvent to clean product	
⊘	8. Never touch water level sensor and avoid product hitting other objects	
⊘	9. Never put your hand above the ceramic disk when product is working, as this could cause pain and damage the machine	
🚫	10. Never wrap the adapter with a cloth or paper, etc. Otherwise, it cannot dissipate heat normally and may cause deformation and burn the membrane from a short circuit. Never touch the adapter with wet hands.	
⊘	11. Do not use other liquids except for water & drops of essential oil	
⊘	12. Do not aim the device at walls, ceilings, furniture surfaces as excess moisture could cause water damage.	
🚫	13. Do not take this unit apart exposing electrical parts. Email customer service for assistance and guarantee information.	
⚠	14. Never place on loose fabric that can block air flow and prevent the unit from misting and ventilating properly.	



We will be happy to assist you with any questions. Please contact our Customer Service Department at 1-888-548-0040. All calls are returned within 24 hours.

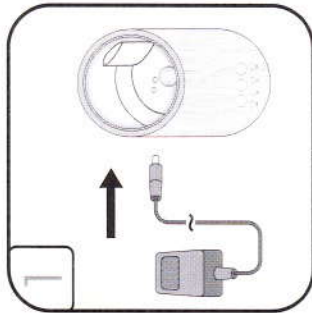
## SERENE LIVING®

© 2015, © 2016 SERENE LIVING  
CLEVELAND, OH 44130 MADE IN CHINA  
www.newgreenair.com

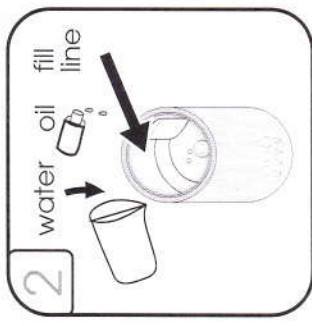
The Sienna Bamboo Diffuser uses high frequency ultrasonic technology that vibrates cool water inside the unit creating an ultra fine mist into the air. When essential oils are added, they are immediately dispersed into the air, providing immediate healthful benefits while helping to ionize the air. It can be used in a bedroom, living room, office area or anywhere you want to create a relaxing, healthful--environment.

**CAUTION:**

- DO NOT FILL BASE UNDER RUNNING WATER.
- DO NOT USE PURIFIED OR DISTILLED WATER.
- DO NOT MOVE ONCE UNIT HAS BEEN FILLED WITH WATER.



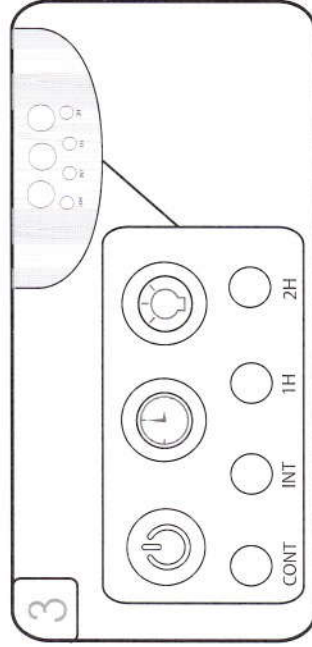
First, plug the power to the unit then connect to a wall outlet.



Using a cup, fill with regular tap water up to the max fill line.

**Do not fill above max fill line.**

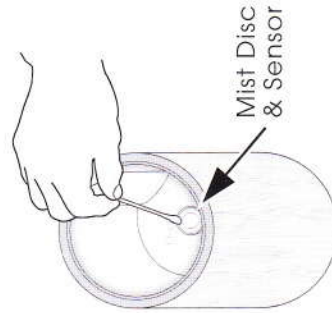
Add up to 5 drops of your essential oil.



**5 Modes of Operation.**

- |                    |                    |                    |
|--------------------|--------------------|--------------------|
| <b>Press Power</b> | <b>Press timer</b> | <b>Press Light</b> |
| 1 Continuous       | 1H timer           | 1 Rotating         |
| 2 Intermittent     | 2H timer           | 2 Fixed            |
| 3 OFF              | Continuous         | 3 Off              |

**NOTE:** Oil mist can damage wooden and painted surfaces, wipe up any residue quickly and often.



Use a cotton swab to gently clean the mist disc and sensor located at the inside bottom of the base.

**Cleaning:**

- Rinse with warm water and clean as follows:
  - i. Wipe with soft damp cloth to clean.
  - ii. Wipe with soft cloth and rubbing alcohol when needed to break up excessive oil residue.
  - iii. Use a cotton swab and water or rubbing alcohol to clean the ceramic disc inside the base.
- **\*See diagram to the left.**
- We recommend cleaning the unit every time you change oils or every 2 uses.
- Do not use detergents or abrasive agents to clean the diffuser unit.

**Do not return this diffuser to the retailer. Please contact the manufacturer's customer service for assistance. 1-888-548-0040**

SYMPTOM	CAUSE	SOLUTION
No Mist	Using incorrect water, distilled or purified Unit is out of water	Use Tap Water (without filter) Add additional water
No Mist or Little Mist	Unit needs to be cleaned. Oils are clinging to ceramic disc or sensor	Clean unit as advised in instructions with clean water & clean ceramic disc/sensor with brush or swab.
Blinking Lights	Water level is higher than max level line Water level indicator is dirty	Remove excess water and restart the diffuser. Clean unit as advised. Pay particular attention to swab the sensor/disc inside the bottom of unit.
Unit will not stop turning even though empty	Water level indicator is dirty	Clean unit as advised. Pay particular attention to swab the sensor/disc inside the bottom of unit.
No misting and unit is spraying water	Water is too cold Water drops may be blocking mist	Change to warmer water Gently tap cover to remove water

**CAUTION:** Keep away from children and pets. Do not use on wooden or painted surfaces that can be damaged by essential oil. Keep the unit upright at all times. Do not tilt unit at any time as water may spill and damage furnishings and fabrics.